

brockhouse

expertise in movable walls



BROCKHOUSE

Demountable Wall

TAWA

ELE

SLI

FANTA



BROCKHOUSE TESH wall systems are not only designed to be human friendly, sustainable and eco-friendly. They combine the best of modern interior design with environmentally conscious construction knowledge. Whether you need movable office walls, retail or tradeshow modular walls, or movable loft walls, BROCKHOUSE systems are the perfect “green building” solutions.

BROCKHOUSE TESH systems create less waste, reduce CO2 emissions, and perhaps most importantly, put a stop to the endless cycle of building, demolishing, disposing and rebuilding.

At **BROCKHOUSE**, we believe the building choices we make today can help save the planet.

Reusable



Absolutely 100% of the wall components can be reused many times during a life cycle of the walls; reused by reconfiguration, transferring or any kind changes in layouts & finishing. Demounted walls can be easily stored or sold on consignment basis and if they are damaged sent for recycling.

Recyclable



Why feed landfills if you can recycle instead? If you no longer need your wall system, BROCKHOUSE TESH components and materials can be recycled or reused. This brings a substantial reduction in production and construction waste, as well as in CO2 emissions.

Long Life Span



Our highly durable BROCKHOUSE TESH systems have an incredibly long life span. They are extremely flexible for any kind of changed in layouts and finishing, without any deterioration. And, because the module components are interchangeable you can create new looks and new configurations for years to come.

Reduced Noise Pollution



Our superior sound-deadening technology ensures a substantial noise level reduction. BROCKHOUSE TESH systems reduce noise pollution and provide greater acoustical privacy, In fact, no extra insulation is required to achieve normal speech privacy, as BROCKHOUSE TESH have an STC factor that corresponds to Sound Transmission Class- 40 (with no insulation).







Once stigmatized as an unnecessary and expensive alternative, demountable wall systems have become a more cost effective as the cost of standard construction materials grew and flexible high-traffic work environments gained prominence. Additionally, its faster assembly compared to standard construction materials means projects utilizing these systems complete earlier. We offer expert pricing services to all our clients on who have a need for demountable wall systems and provide packaged solutions that balance its cost and implementation.



Demountable walls have many benefits when compared to drywall construction, some of them include:

- satisfy the functional interior wall needs of an office space and speed up construction
- offer modular flexibility for reuse and reconfiguration even after the project is complete
- have a history of successful use and durability in a wide variety of settings
- increase the sustainability of your construction project
- depreciate faster than drywall to offer a quicker return on your investment











Demountable Wall Specification

Model	Thickness	Type	Max Height	STC Rating
TAWA	100-108mm	DG / DS / SG	8.0M	42-50
ELE	83- 86mm	DG / DS	3.5M	35-42
SLI	70mm	DG / DS / WD	3.0M	28-30
FANTA	40mm	SG	3.0M	28-30

- +DG: Double Glazed partition
- +DS: Double Solid partition
- +SG: Single Glazed partition
- +WD: Wall Decoration



Sound insulation

EFFECT OF SOUND INSULATION



- 20dB** Radio music of normal volume clearly audible. Speech still comprehensible.
- 30dB** Radio music of normal volume still audible. Speech still audible but hardly comprehensible.
- 40dB** Radio music and loud speech perceptible.
- 45dB** Radio music and loud speech perceptible ,but not comprehensible.
- 50dB** Radio music of normal volume silently audible. Speech not audible.
- 55dB** Radio music of normal volume inaudible ,loud radio music silently audible.
- 60dB** Very loud radio music weakly audible.

Through our multi-layers sealing design, we offer excellent acoustic product reaches up to 48dB, which can ensure business discussion and confidential business with minimal outside interference.



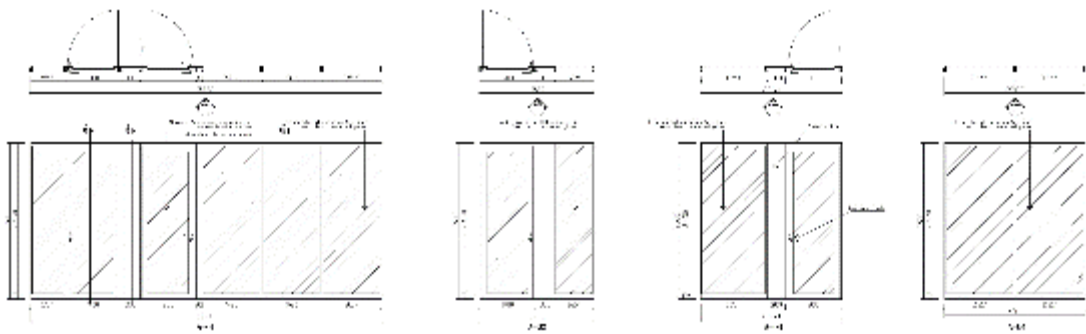
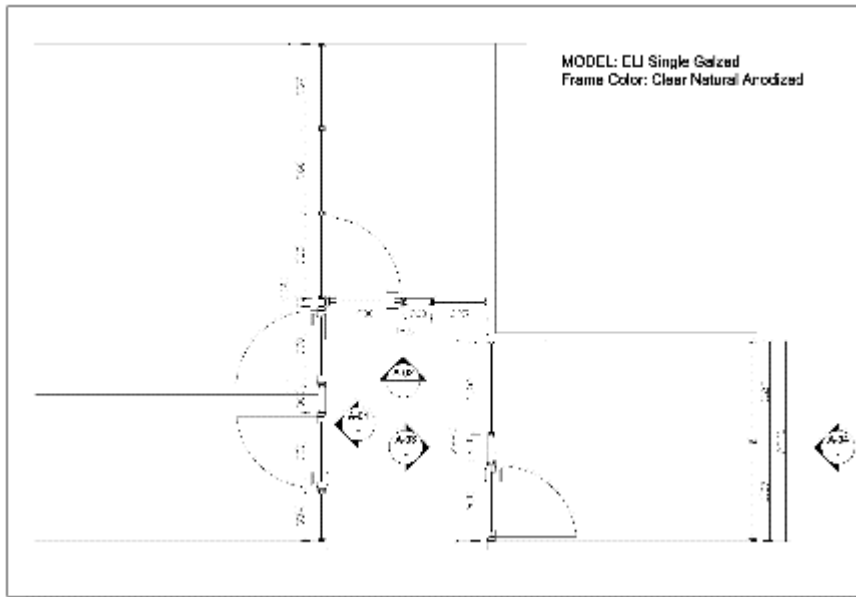






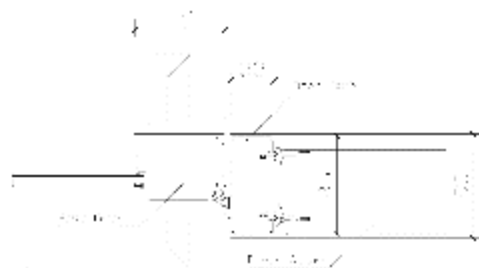


Demountable Wall Technical Drawings

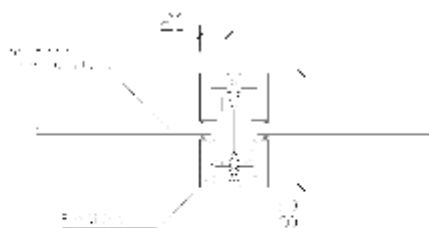




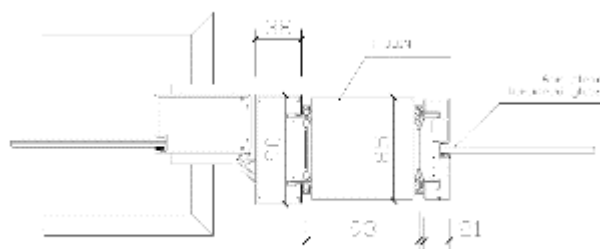
1 Partition to Wall
DETAIL



2 Pass door, Door Jamb and Power Column
DETAIL



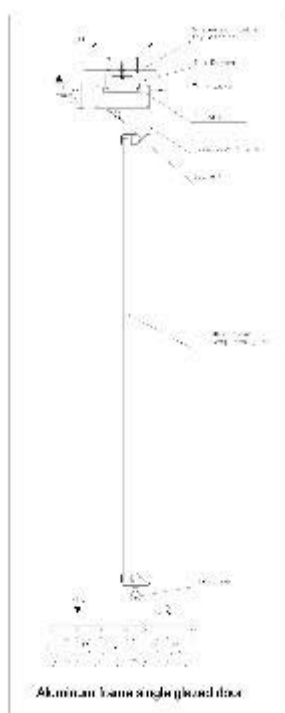
3 Partition to Partition
DETAIL



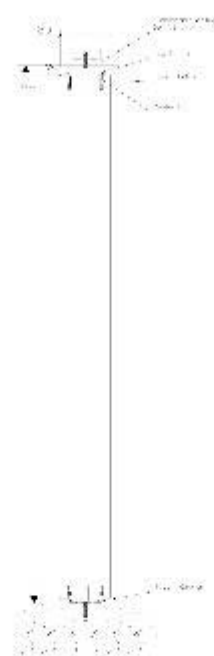
4 T Joint
DETAIL



Single glazed partition wall



Aluminum frame single glazed door



Power column

FANTA





